



CIPP Spot Repairs

Extend the Life of your Pipes with Trenchless Precision

Cured-In-Place Pipe (CIPP) Spot repair is a trenchless method used to rehabilitate existing pipelines without the need for excavation. This minimizes disruption to the surrounding environment, reduces costs associated with digging, and allows for repairs in challenging or inaccessible locations.

CIPP Spot Repairs

Sectional lining is a trenchless repair technology for sanitary and storm systems to provide a more cost-effective way for municipalities and utilities to make much needed repairs before the situation gets worse.

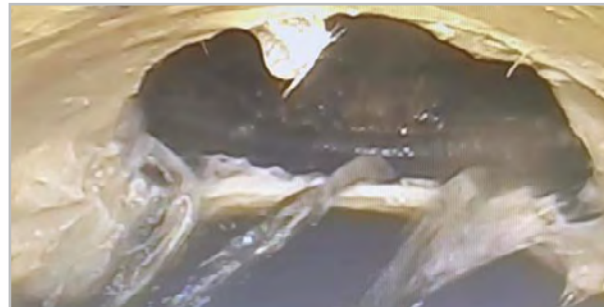
CIPP Spot Repairs involves using a fiberglass cloth coated in a mixture of resin once cured the average tensile strength is 24,500 PSI and the average flexural strength is 27,500 PSI.

Single spot repair lengths range from 18"- 48" and 6"- 24" in pipe diameter. If longer sections are needed the crew can connect multiple spot liners to make one long repair. Duke's offers spot repairs using Ultra-Violet (UV) technology.



Robotic Cutting & Reinstatement

Duke's also has the capability to repair sections of pipe with taps. We can use our robotic cutter to cut out protruding taps or break ins and then install a spot repair over the area. Once it has cured, you can go back through and reinstate the lateral.



continues on next page >

CIPP Spot Repairs *continued*

Top Hat Lining

Utilizing state-of-the-art Ultra-Violet (UV) light curing technology, we install a resin-impregnated, flexible fiberglass insert into your house connection pipe, eliminating the need for disruptive digging. This method ensures a quick, efficient, and cost-effective solution for Service Lateral Connection (SLC) rehabilitation.



Top Hat Lining **Before**



Top Hat Lining **After**

